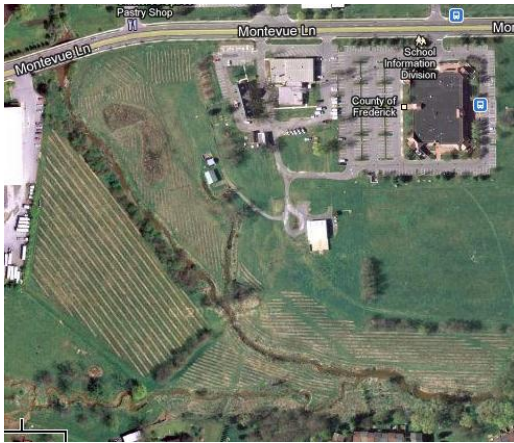


WELCOME TO THE CARROLL CREEK WILDLIFE PARK (CCWP)



Created by Hood College Students:

**Corinne Ransom, Chrissy Tropea,
Chris Papinsick, Alison Diviney**

WHAT IS THE CCWP?

The Carroll Creek Wildlife Park is an ongoing restoration and conservation project coordinated by the Hood College Environmental Science department.

The site is located behind the Frederick County Health Department building at 305 Montevue Lane, down the hill from a gravel parking lot.

WHAT CAN YOU DO AT THE CCWP?

- **Outdoor field trips**
- **Picnicking**
- **Birding**
- **Geocaching**
- **Identifying plants and animals**
- **Exploring!**

BRIEF HISTORY OF THE CCWP

Early 1700s- settlement in Frederick County

July 28th, 1746- Brunner family buys the land containing the CCWP

1820- 1860- Alms house built

1869- Alms house renovated into the Montevue County Hospital

1987- Hospital demolished and replaced by the Frederick County Health Department

2002- Restoration work begins on the cow field adjacent to the Health Department

2004/2005- Construction phase of restoration work ends

IMPORTANT TERMS

Restoration: to return a natural environment to a previous condition and reverse environmental degradation caused by human activities.

Conservation: the act of preservation, protection, or restoration of the natural environment, natural ecosystems, vegetation, and wildlife over time.

Ecosystem services: the benefits the environment offers humans for free just by doing what a healthy ecosystem does naturally.

Riparian buffer: an area of trees and vegetation around a body of water.



WHY IS CONSERVATION AND RESTORATION IMPORTANT?

Healthy environments offer much more to humans than degraded ones. When in proper condition, a riparian buffer zone like the CCWP offers local protection from flooding and drought. The trees along the banks also stabilize the soil, reduce erosion, and remove excess nutrients and pollution from land runoff, which improves water quality downstream. The environment shelters native plants and land animals, and roots and vegetation along the bank create a habitat for invertebrates and fish.

Look for more about the CCWP, as well as teacher and parent resources like the Kid-Friendly Plant Guide, at the Hood College Biology Department page:

<http://hood.edu/academics/biology/index.html>