

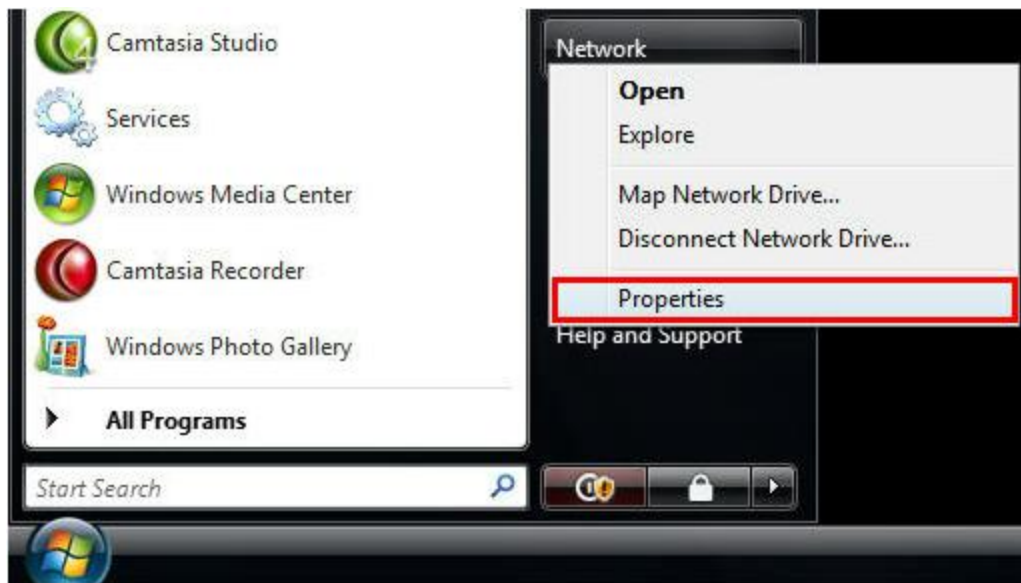
Windows 7: Connecting to the unsecure@hood wireless network at Hood College

Please ensure your computer meets the following
criteria in order to successfully make a connection to
this network:

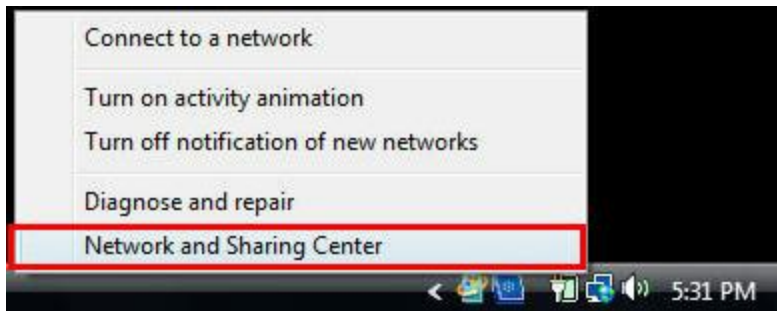
- 802.11g/n capable Network Adapter
- Latest manufacturer drivers for the Network Adapter

Step 1:

Right click the **Network** menu item in the start menu and select **Properties**.



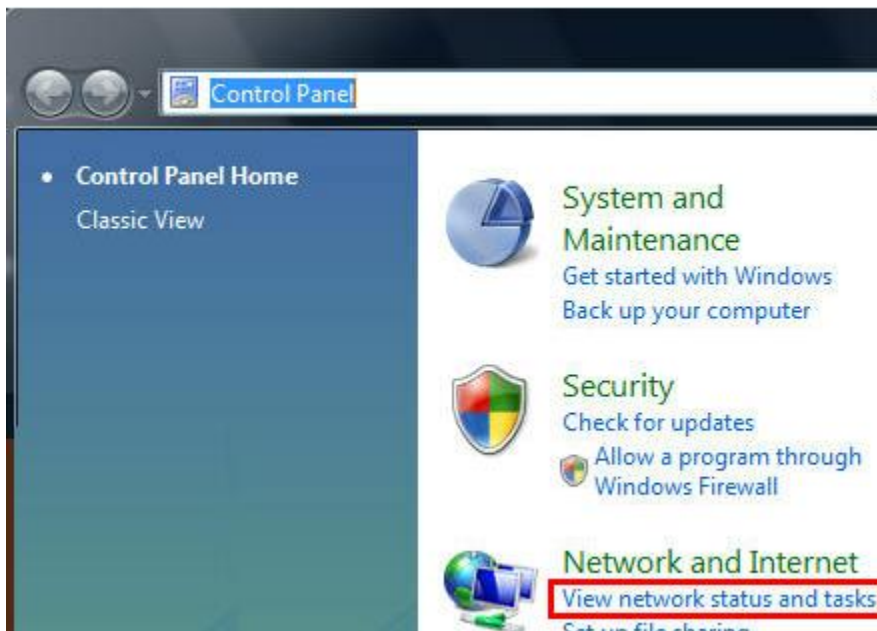
Alternatively you can also right click on the network icon in the applications tray and select **Network and Sharing Center** or click on the **Wireless networks are available** bubble that appears in the same application tray area.



*If you don't see **Network** menu item please do the following: Click **Start**, click **Control Panel**, then select under the **Network and Internet** icon the link for **View network status and tasks**.

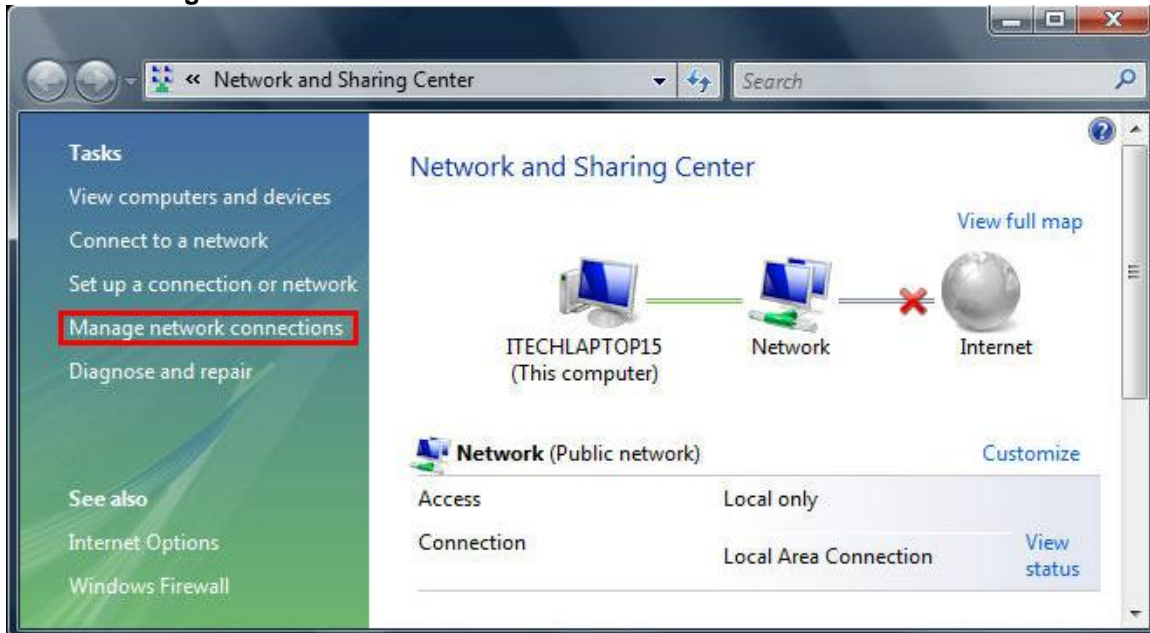


Select under the **Network and Internet** icon the link for **View network status and tasks**.



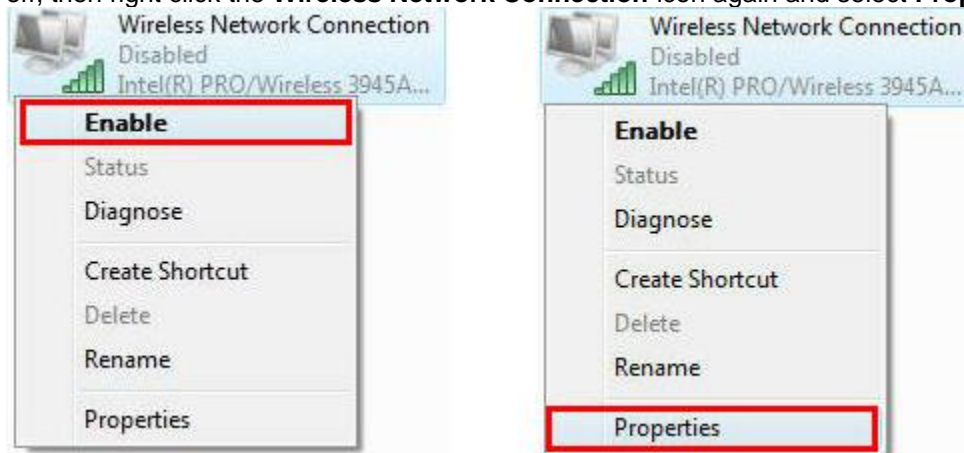
Step 2:

Click the **Manage network connections** link.



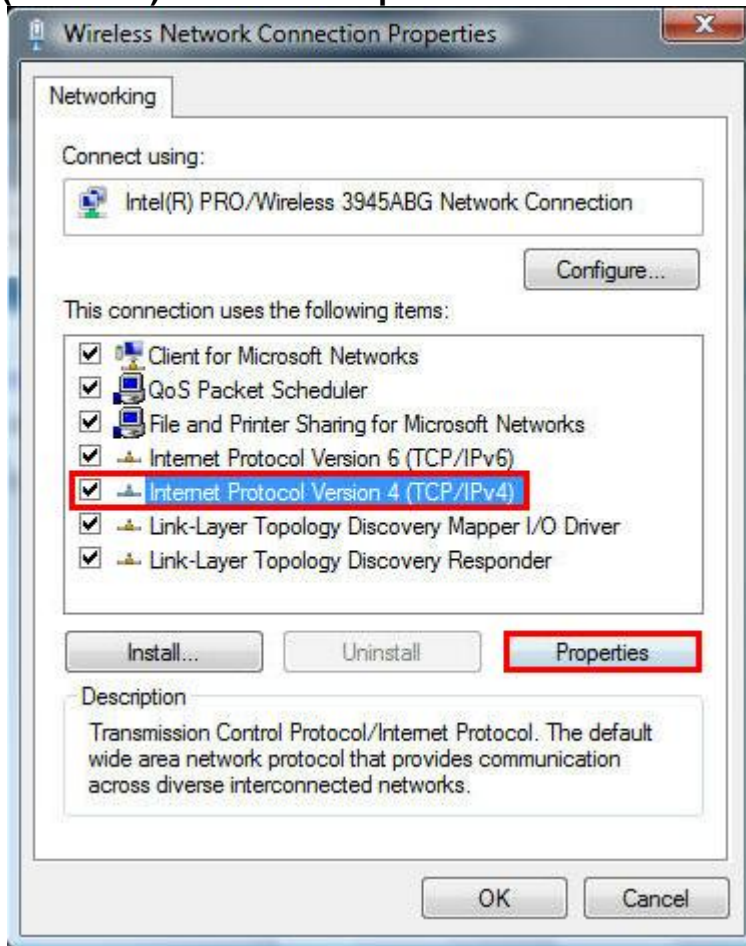
Step 3:

Right click your **Wireless Network Connection** icon and **Enable** your wireless radio if it is turned off, then right click the **Wireless Network Connection** icon again and select **Properties**.



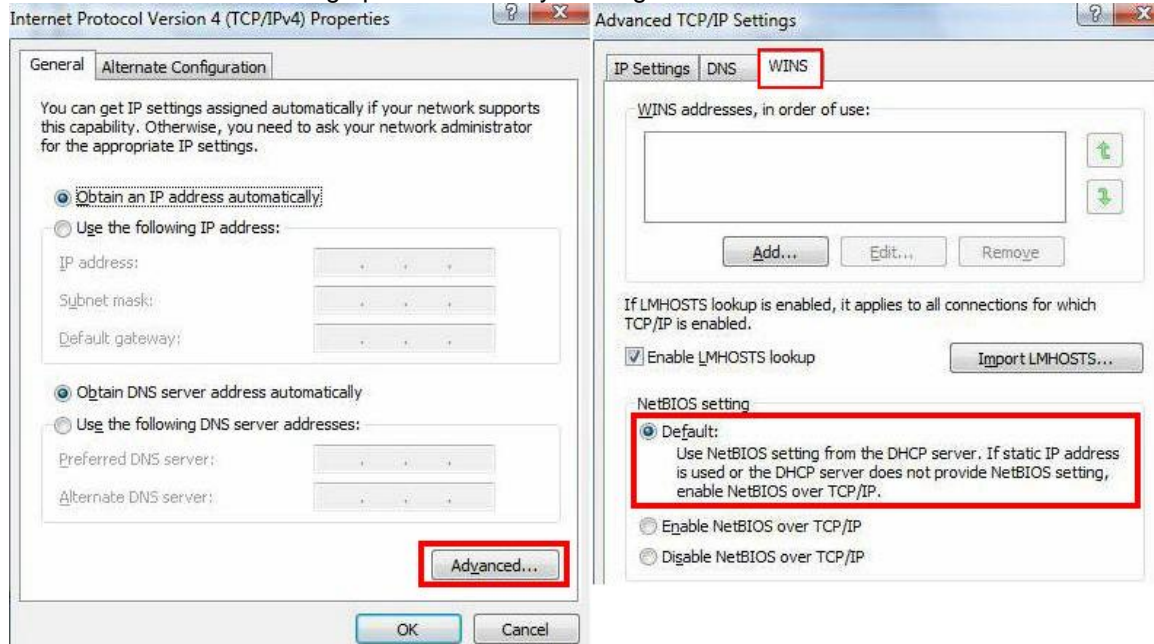
Step 4:

Under the **General or Networking** tab, click on **Internet Protocol Version 4 (TCP/IPv4)** and select **Properties**.



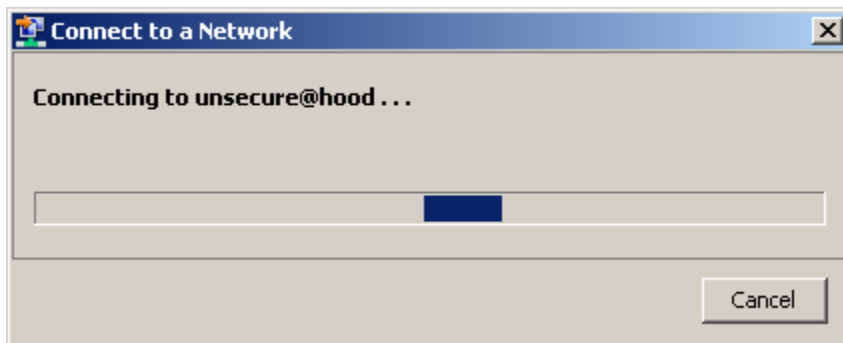
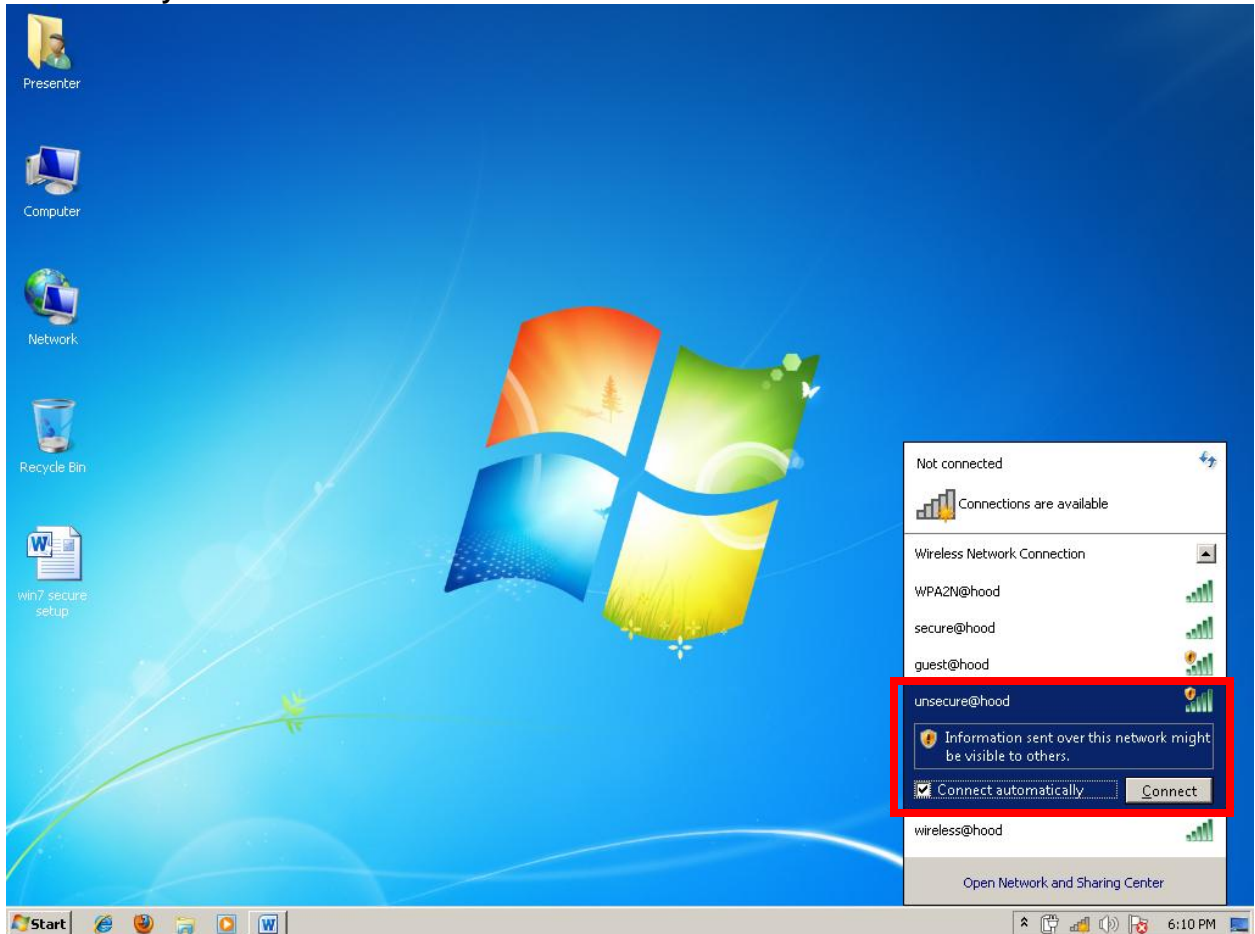
Step 5:

In the window that opens, Select **Obtain an IP address automatically**. Also select **Obtain DNS server address automatically**. Click the **Advanced** button. Select and remove all WINS addresses (if any) from the **WINS address in order of use** box. Select the **Default** radio button (**Use NetBIOS settings from the DHCP server**) in the NetBIOS Setting section, click **OK** or **Close**. Close the remaining open windows by clicking **OK** or **Close**.



Step 6:

Locate **unsecure@hood** from the network icon in the applications tray and check the **Connect automatically** check box and then click **Connect**



Step 7:

Verify you are connected to **unsecure@hood** from the connection icon in the application tray.



Step 8:

Open any web browser, which should automatically redirect you to the **Hood authentication** page. On the login page, enter your username. (prefix your username with **pergola**) Enter your password and Click **Log in**.

A screenshot of the Hood College Wireless Network login page. The page has a grey background. On the left, there's a logo of Hood College, which is a shield with the letters 'H' and 'C' and the year '1893'. To the right of the logo, the text 'HOOD COLLEGE' is displayed in a large, blue, serif font. Below the logo, there's a section titled 'REGISTERED USER' in a bold, black font. Under this title, there are two input fields: 'USERNAME' with the text 'pergola\abc01' and 'PASSWORD' with a series of dots. Below these fields is a 'Log In' button. To the right of the login fields, there's a section titled 'WELCOME TO HOOD'S CAMPUS WIRELESS NETWORK' in a bold, black font. Below this title, there's a paragraph of text: 'Please Logon using your Hood College network credentials. Username should include the Hood College Domain (ex Pergola\abc01)'. At the bottom of the page, there's a small note: 'Logging in as a registered user indicates you have read and accepted the Acceptable Use Policy.'

Once you have properly authenticated to the network you will be redirected in your web browser to your default homepage. You are now connected to the Hood network.

User Authenticated

In 2 seconds you will be automatically redirected to <http://go.microsoft.com/fwlink/?LinkId=69157>.

Click [here](#) to go there directly.

Click [here](#) to bookmark this page.

[logout](#)